

Burner mounting hardware:

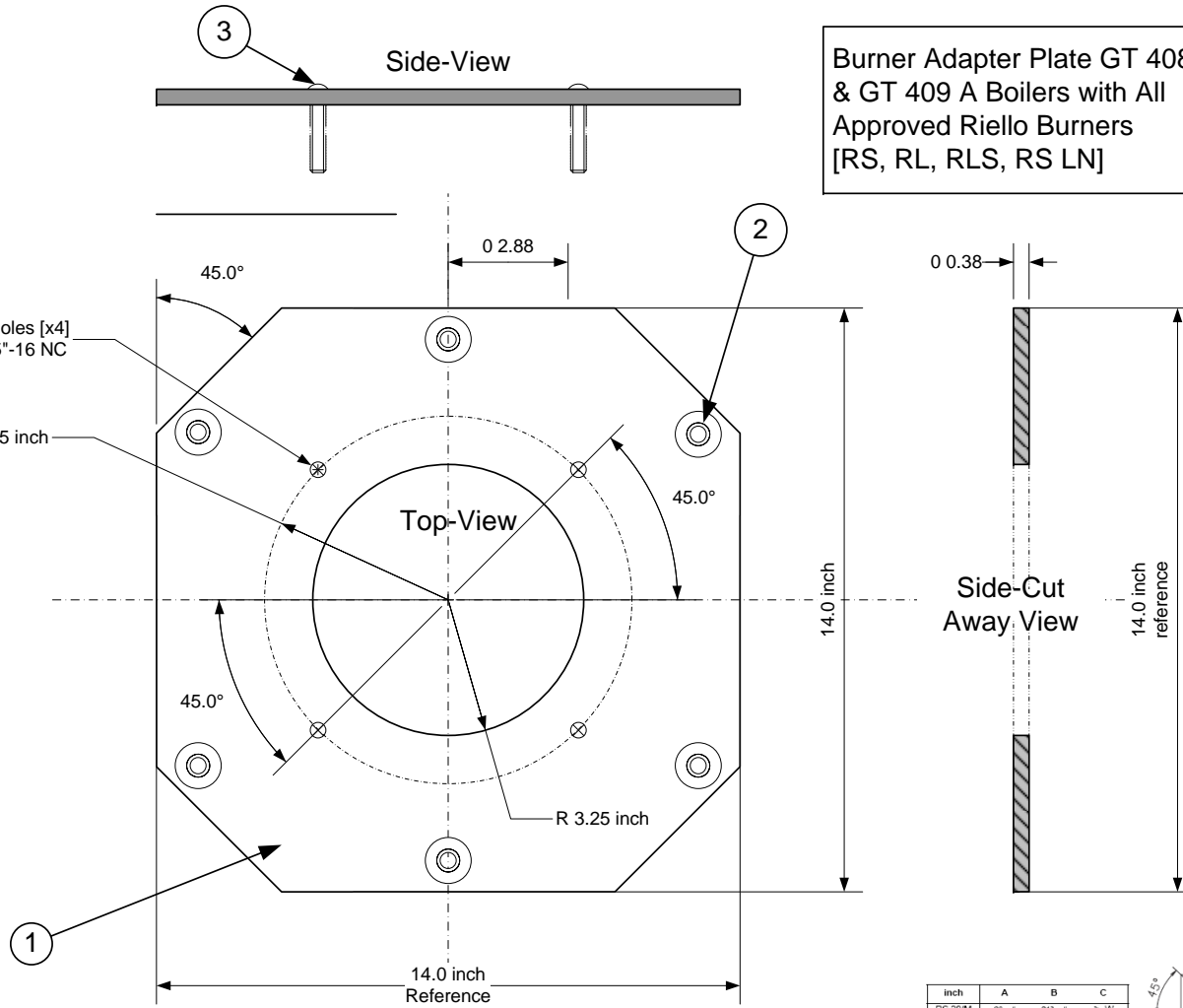
Studs: 3/8 inch x 2.0 inch [x4]
C/w washer & hex nut



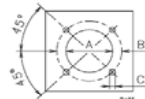
Burner Adapter Plate GT 408 A
& GT 409 A Boilers with All
Approved Riello Burners
[RS, RL, RLS, RS LN]

Vendor Notes:

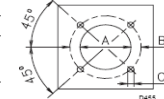
- ① Mounting Plate designed De Dietrich GT 400 A Series Boiler Swing Boiler Door, according to original design by RPM
- ② Counter sunk holes fixing plate to boiler door, per original design by RPM [Dimension shown only reference]
- ③ Plate holes for burner mounting to be drill and tapped, studs to be reinforced at back
- ④ Plate to be unfinished, free of any burrs or sharp edges.



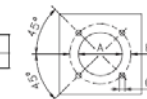
inch	A	B	C
RL 28	6 5/8"	8 1/4"	3 3/4" W
RL 38	6 5/8"	8 1/4"	3 3/4" W
RL 50	6 5/8"	8 1/4"	3 3/4" W



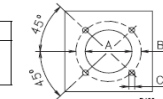
inch	A	B	C
RLS 28	6 9/32"	8 1/4"	3 3/4" W
RLS 38	6 9/32"	8 1/4"	3 3/4" W
RLS 50	6 9/32"	8 1/4"	3 3/4" W



inch	A	B	C
RS 45M LN	6 9/32"	8 1/4"	3 3/4" W

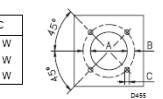


inch	A	B	C
RS 35M	6 9/32"	8 1/4"	3 3/4" W
RS 38M	6 9/32"	8 1/4"	3 3/4" W
RS 50M	6 9/32"	8 1/4"	3 3/4" W



(A)

inch	A	B	C
RL 28M	6 5/8"	8 1/4"	3 3/4" W
RL 38M	6 5/8"	8 1/4"	3 3/4" W
RL 50M	6 5/8"	8 1/4"	3 3/4" W



(B)

Drawing Template [0]



Flexible Eutectic Boilers Ltd. [North America]
1090 Fountain Street North, Unit 10 & 11
Cambridge, Ontario N3E 1A3 – Canada
Tel: 1.800.943.6275 Fax: 519.650.1709
Website: www.dedietrich-northamerica.com

Description

GT 400 A Burner Mounting Adapter Door Plate – Riello R28-50 Burners

Creator	Craig H.	Tolerances ±	0.03"	Material	CRS
Approved		Scale	3 in = 1 ft.	File Name	2-400-RIE-001
Revision	0	Units	Inches	Date [mm/dd/yy]	09/28/06