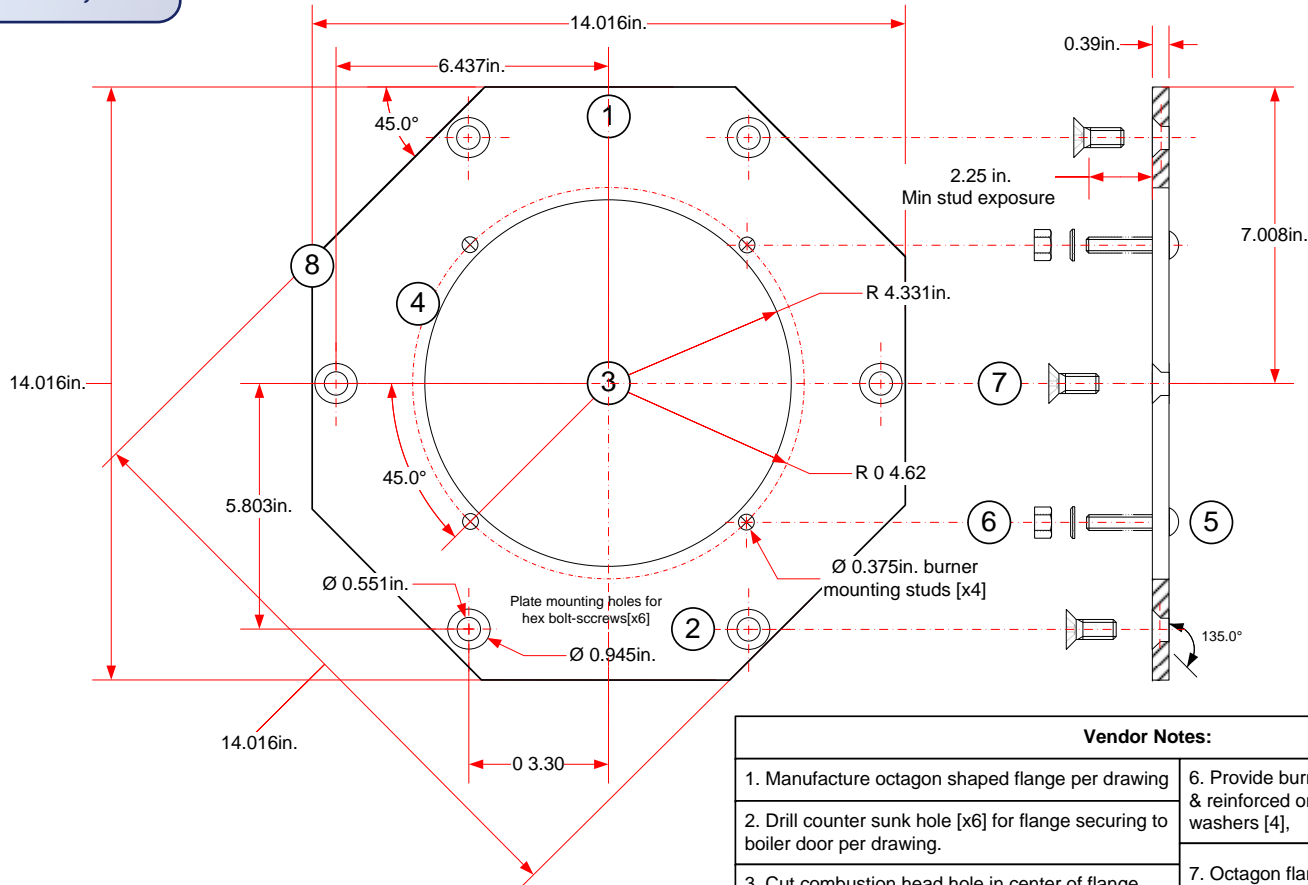



REVISED

9:45 am, Jul 21, 2008



Revision(s)
 1. Not noted
 2. changed stud length from 2.0" to 2.75" due to burner flange and gasket thickness.

Vendor Notes:	
1. Manufacture octagon shaped flange per drawing	6. Provide burner mounting stud threaded & reinforced on flange with nuts and washers [4],
2. Drill counter sunk hole [x6] for flange securing to boiler door per drawing.	7. Octagon flange securing bolts provided by FEB-De Dietrich
3. Cut combustion head hole in center of flange per drawing.	8. No finish specified, flange and all work to be free of burrs and sharp edges..
4. Drill and tap burner studs 3/8" x 2.75" 16 NC [x4].	
5. Reinforce burner studs at backing.	

Drawing Template [0]	De Dietrich  DDR Americas Inc. 1090 Fountain Street North, Unit 10 & 11 Cambridge, Ontario N3E 1A3 – Canada Tel: 1.800.943.6275 Fax: 519.650.1709 Website: www.dedietrichboilers.com		Description					GT430A (Formlery GT400A) door burner mounting plate – Weishaupt WM G10/3 & 4, Sizes 7 & 8	
	Creator	Craig H.	Tolerances ±	0.03"	Material	ANSI 321 or equal			
	Approved		Scale	3" = 1ft.	File Name	2-400-WEI-003a (R2)			
	Revision	2	Units	Inches	Date [mm/dd/yy]	032/03/09			

4.4 Burner installation

Prepare heating appliance

The diagram shows the refractory for a heating appliance without a cooled front. The refractory must not project beyond the front edge of the combustion head. The refractory can take a conical shape ($\geq 60^\circ$). Refractory may not be required on boilers with water-cooled fronts, unless the manufacturer gives other instructions.

Combustion head	Dimensions in inches and mm					
	d ₁	d ₂	d ₃	d ₄	d ₅	l ₁
WMG10-4/1a			M10			
inches	8.5"	9.8"		8.7"	9.3"	7.7" ^① ... 8.7" ^②
mm	215	250		220	235	195 ^① ... 220 ^②

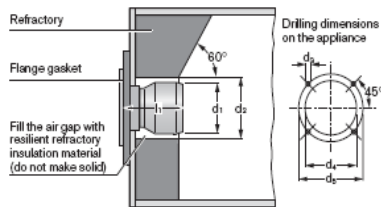
- ① Combustion head open
- ② Combustion head closed

Combustion head extension

Boiler constructions with a deep refractories or thick doors, and boilers with reverse flame combustion chambers, require a combustion head extension. Head extensions of 4", 8" and 12" (100, 200 and 300 mm) are available. Dimension l₁ changes in relation to the head extension used.

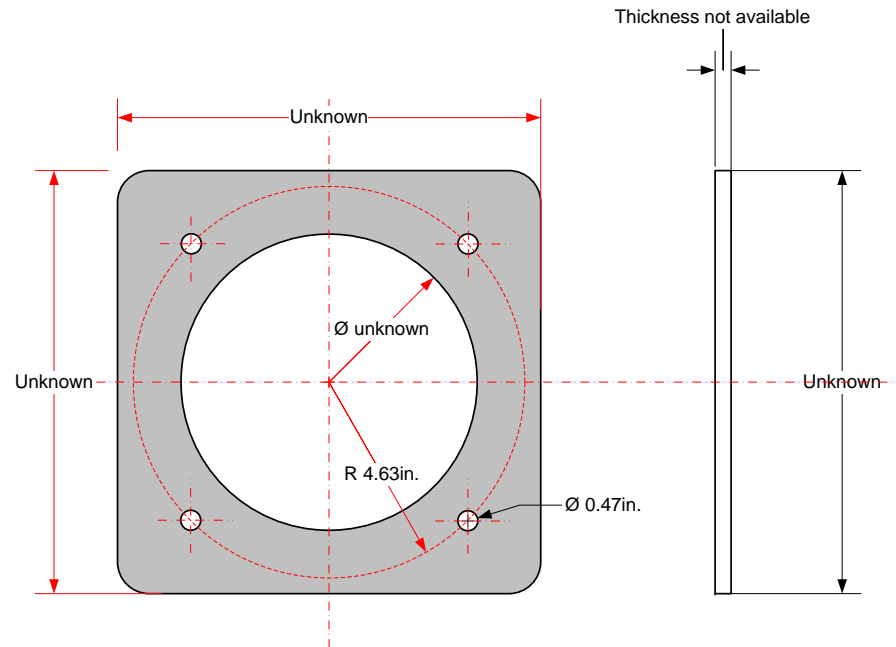
Burners with head extensions can still be hinged open. It is important that the burner can be hinged open by 90° to allow easy, rearwards removal of the mixing head, which also has the same length extension.

Refractory and drilling dimensions (basic drawing)



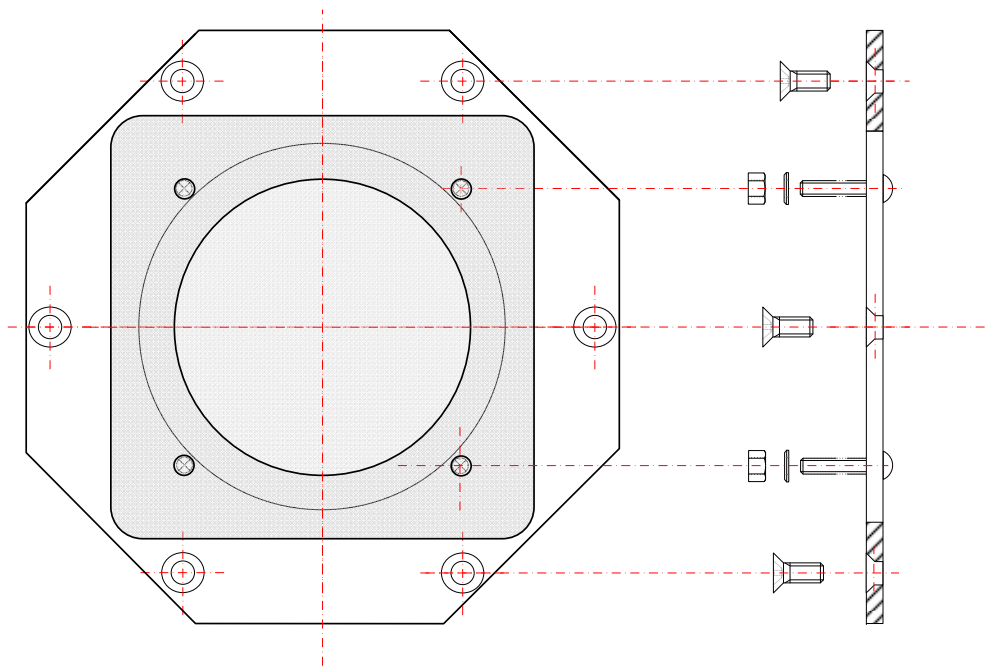
IMPORTANT


Some burner parts (e.g. flame tube, burner flange, etc.) become hot during operation and should be allowed to cool prior to service work being carried out.



**Weishaupt
WM-G-10/4
burner flange**

Drawing Template [0]	De Dietrich		Description		Weishaupt WM G10/4 gas burner flange, part of burner construction – drawing may not necessarily reflect actual burner flange			
	Flexible Eutectic Boilers Ltd. [North America] 1090 Fountain Street North, Unit 10 & 11 Cambridge, Ontario N3E 1A3 – Canada Tel: 1.800.943.6275 Fax: 519.650.1709 Website: www.dedietrich-northamerica.com		Creator	Craig H.	Tolerances ±	0.03"	Material	Unknown
			Approved		Scale	3" = 1 ft.	File Name	2-400-WEI-003b
			Revision	0	Units	Inches	Date [mm/dd/yy]	05/04/07



Drawing Template [0]	De Dietrich 		Description				OEM GT400 boiler-burner mounting plate final assembly drawing	
	Flexible Eutectic Boilers Ltd. [North America] 1090 Fountain Street North, Unit 10 & 11 Cambridge, Ontario N3E 1A3 – Canada Tel: 1.800.943.6275 Fax: 519.650.1709 Website: www.dedietrich-northamerica.com		Creator	Craig H.	Tolerances ±	0.03"	Material	Not specified
			Approved		Scale	3" = 1ft.	File Name	2-400-WEI-003c
			Revision	1	Units	Inches	Date [mm/dd/yy]	05/18/07