

- Cut view of metal plate
- Plate Insulating block material
- Combustion head insulation

Blank Plate Modifications
 Burner Head Hole
 Tap & Drill for mounting studs
 1/2" - 16 NC studs with flat wash and nut, to be supplied
 All cuts to be free of burrs and sharp edges
 Detail 'A' stud to be reinforced at back

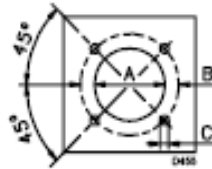
Installer Note:
 Insulating block & insulation material provided in separate accessories box, items to be field modified on site to suit need.

- (A)** Mounting stud holes to be reinforced at back
- (B)** Mounting Studs [x4] 1/2" 13 NC X 2.0"

Boiler-Burner Mounting Plate Raw Material DDT 8259-0538

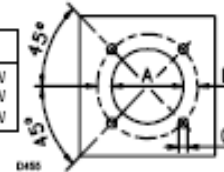
Drawing Template [0]	De Dietrich		Description				OEM Burner Mounting Plate – Modifications for GTE 515-522 A Boiler fitting with all Riello Burner Models	
	Flexible Eutectic Boilers Ltd. [North America] 1090 Fountain Street North, Unit 10 & 11 Cambridge, Ontario N3E 1A3 – Canada Tel: 1.800.943.6275 Fax: 519.650.1709 Website: www.dedietrich-northamerica.com		Creator	Craig H.	Tolerances ±	0.03"	Material	8259-0538
			Approved		Scale	3" = 1 ft.	File Name	2-500-RIE-001a
			Revision	0	Units	Inches	Date [mm/dd/yy]	09/07/06

Inch	A	B	C
RL 70/M	7 ⁹ / ₃₂ "	10 ²⁷ / ₃₂ " - 12 ¹³ / ₁₆ "	1/2 W
RL 100/M	7 ⁹ / ₃₂ "	10 ²⁷ / ₃₂ " - 12 ¹³ / ₁₆ "	1/2 W
RL 130/M	7 ²¹ / ₃₂ "	10 ²⁷ / ₃₂ " - 12 ¹³ / ₁₆ "	1/2 W



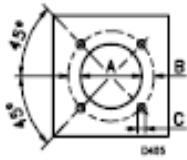
(A)

Inch	A	B	C
RS 70/M	7 ⁹ / ₃₂ "	10 ¹³ / ₁₆ " - 12 ²⁵ / ₃₂ "	1/2 W
RS 100/M	7 ⁹ / ₃₂ "	10 ¹³ / ₁₆ " - 12 ²⁵ / ₃₂ "	1/2 W
RS 130/M	7 ²¹ / ₃₂ "	10 ¹³ / ₁₆ " - 12 ²⁵ / ₃₂ "	1/2 W



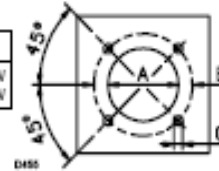
(A)

Inch	A	B	C
RLS 70	7 ⁹ / ₃₂ "	10 ²⁷ / ₃₂ " - 12 ²⁵ / ₃₂ "	1/2 W
RLS 100	7 ²¹ / ₃₂ "	10 ²⁷ / ₃₂ " - 12 ²⁵ / ₃₂ "	1/2 W
RLS 130	7 ²¹ / ₃₂ "	10 ²⁷ / ₃₂ " - 12 ²⁵ / ₃₂ "	1/2 W



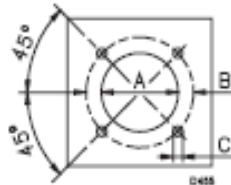
(A)

Inch	A	B	C
RS 68/M LN	7 ¹¹ / ₁₆ "	10 ¹³ / ₁₆ " - 12 ²⁵ / ₃₂ "	1/2 W
RS 120/M LN	7 ¹¹ / ₁₆ "	10 ¹³ / ₁₆ " - 12 ²⁵ / ₃₂ "	1/2 W

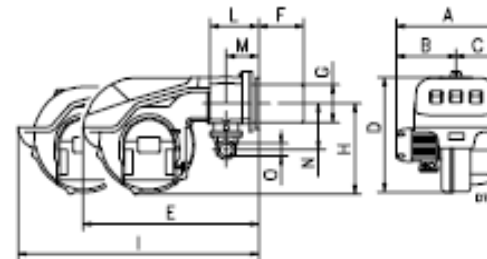


(A)

Inch	A	B	C
RL 70	7 ⁹ / ₃₂ "	10 ²⁷ / ₃₂ " - 12 ¹³ / ₁₆ "	1/2 W
RL 100	7 ⁹ / ₃₂ "	10 ²⁷ / ₃₂ " - 12 ¹³ / ₁₆ "	1/2 W
RL 130	7 ⁹ / ₃₂ "	10 ²⁷ / ₃₂ " - 12 ¹³ / ₁₆ "	1/2 W



(A)



Riello Burner Models

- RL 70-130/2
- RL 70-130/M
- RS 70-130/M
- RLS 70-130
- RS 68-120/M LN

Drawing Template [0]



Flexible Eutectic Boilers Ltd. [North America]
 1090 Fountain Street North, Unit 10 & 11
 Cambridge, Ontario N3E 1A3 – Canada
 Tel: 1.800.943.6275 Fax: 519.650.1709
 Website: www.dedietrich-northamerica.com

Description

Riello Burner mounting reference

Creator

Craig H.

Tolerances ±

0.03"

Material

None

Approved

Scale

3" = 1 ft.

File Name

2-500-RIE-001b

Revision

0

Units

Inches

Date [mm/dd/yy]