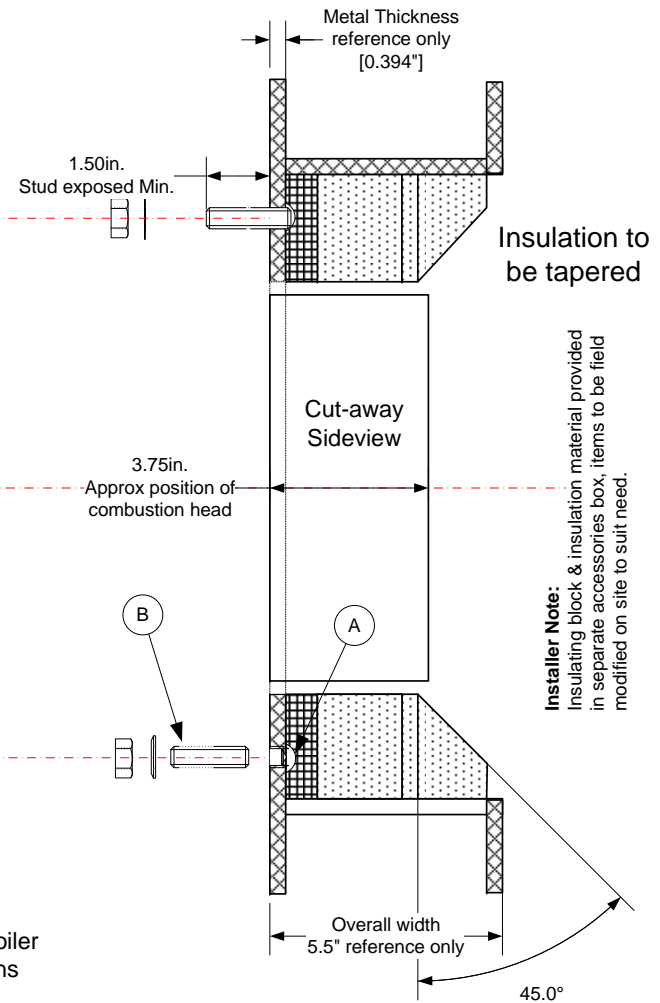


Revisions:
 0 – original document
 1 – change drawing description, mounting plate drawing good for all Webster JB2 burners.

- Cut view of metal plate
- Plate Insulating block material
- Combustion head insulation

**Vendor Notes – GTE 500 A Series Boiler
 Boiler Burner Blank Plate Modifications**
 Burner Head Hole
 Tap & Drill of mounting studs
 1/2" studs with flat wash and nut.
 All cuts to be free of burrs and sharp edges



Installer Note:
 Insulating block & insulation material provided in separate accessories box, items to be field modified on site to suit need.

- (A) Mounting stud holes to be reinforced at back
- (B) Mounting Studs [x4] 1/2" x 2.0" - 13 UNC X 2.0" & washer & nut

Drawing Template [0]	De Dietrich		Description					OEM GTE 500 A boiler-Burner mounting door – Modifications required for mounting Webster Engineering model JB2 burners.	
	Flexible Eutectic Boilers Ltd. [North America] 1090 Fountain Street North, Unit 10 & 11 Cambridge, Ontario N3E 1A3 – Canada Tel: 1.800.943.6275 Fax: 519.650.1709 Website: www.dedietrich-northamerica.com		Creator	Craig H.	Tolerances ±	0.03"	Material	8259-0538	
			Approved		Scale	3" = 1 ft.	File Name	2-500-WEB-001	
			Revision	1	Units	Inches	Date [mm/dd/yy]	03/30/07	