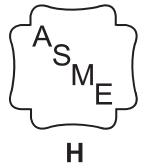




Submittal Sheet
Model GT 123A to 126A
Cast Iron Boiler



Project Name	
Project location	
Contractor	
Engineering Firm	
Boiler Representative	
Sales Rep. Phone	
Date Created	

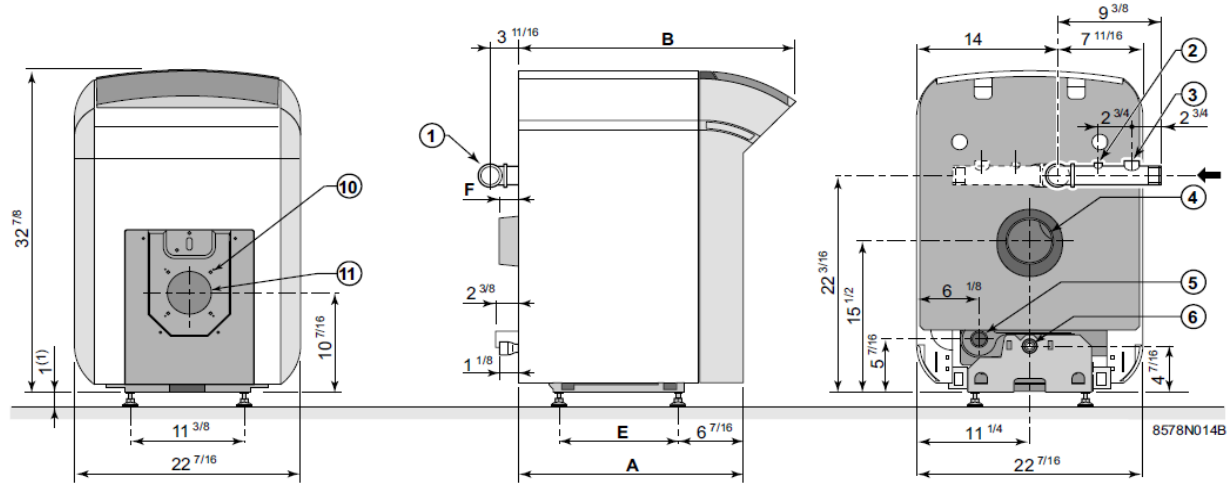
Boiler Model		Burner Model	
Assembled		Burner Included	
Relief Valve		Fuel Type	
Boiler Options		Burner Options	
Code			

Revision

1		Date:	4		Date:
2		Date:	5		Date:
3		Date:	6		Date:

Engineering Submittal Package for GT120A Series

• GT 120 A



	A	B	øD	E	F
GT 123 A	22 ^{1/4}	27	4 ^{15/16}	11 ^{13/16}	2
GT 124 A	26 ^{15/16}	32	4 ^{15/16}	16 ^{13/16}	2
GT 125 A	32 ^{1/4}	37	4 ^{15/16}	21 ^{13/16}	2
GT 126 A	37 ^{1/4}	42	6	26 ^{13/16}	3 ^{7/8}

- (1) Adjustable feet : basic height 1", adjustment range 1" to 1^{9/16}
- 5 1 1/4" threaded heating return
- 6 1/2" tapped draining outlet
- 1 1 1/4" threaded heating outlet
- 10 4 x M8 on ø 5^{7/8}
- 2 Tapping 1/4"
- 4 markings on ø 6^{15/16}
- 3 Tapping 3/4"
- 11 ø 4^{5/16} hole
- 4 Flue gas nozzle ø D
- ø 5^{1/8} cut-out

Boiler Specifications

Item		Unit	GT 123 A	GT 124 A	GT 125 A	GT 126 A	
Firing Sequence		Gas-Oil - On-Off - Single Stage Only					
[CSA] - Gas Input		MBH	94	115	144	166	
		kW	27.5	33.7	42.2	48.65	
[CSA] - # 2 Fuel Oil Input		US GPH	0.65	0.80	1.00	1.15	
[CSA] - Output [Gas-Oil]		MBH	78	96	120	138	
		kW	22.9	28.1	35.2	40.4	
[NET] - Output [Gas-Oil]		MBH	68	83	104	120	
[CSA] - AFUE Effy.		%	Gas 85% & Oil 87%				
Cast Iron Sections		#	3	4	5	6	
Heating surface area		Sq. ft.	11.1	15.3	19.4	23.6	
Water capacity		US Gal	5	6.5	7.9	9.4	
		Liter	19	24.5	30	35.5	
Water resistance [Δt = °F]		18° F	Ft. H ₂ O	0.13	0.20	0.30	0.42
		27° F	Ft. H ₂ O	0.06	0.09	0.14	0.19
		36° F	Ft. H ₂ O	0.03	0.05	0.08	0.11
Combustion chamber Dimensions		Diameter [Equivalent]	Inch	9.45			
			mm	240			
		Depth	Inch	12.13	17.13	22.13	27.13
			mm	308	435	562	689
		Volume	ft ³	0.57	0.74	0.92	1.09
			m ³	16.0	21.0	26.0	31.0
MAWP [Water]		PSI	ASME IV Rating Class 30 - (60 PSI) [See Canadian Provincial CRN approvals]				
Min. Safety Relief Capacity		MBH	78	96	120	138 ≧	
S2NA Panel	Electrical Connection		V/P/H 120/1/60				
	Maximum Temperature [Water]		°F 230				
			°C 110				
	Operating Water Temperature Range		°F 104 - 212				
°C 40 - 100							
Chamber Resistance		Inch w.c.	0.06	0.09	0.09	0.09	
		mbar	0.15	0.22	0.22	0.22	
Gas-Vent Category		#	I, II - III or IV				
Boiler Vent Connection		Inch	5	5	5	6	
Weight [Dry]		lb	302	357	412	470	
		kg	137	162	187	213	