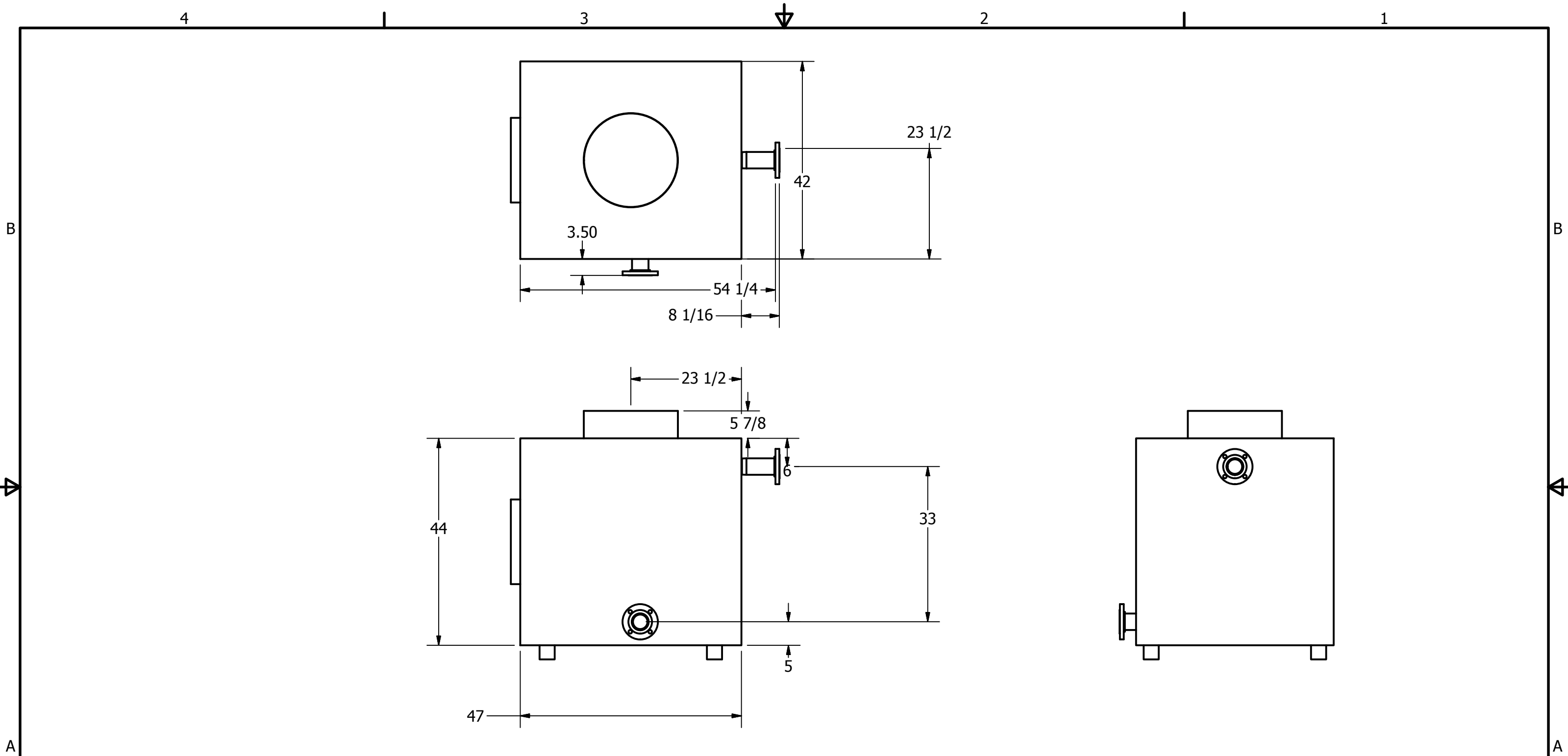


DRAWN	8/11/2010	TITLE On-site Economizer Typical Piping Diagram		
CHECKED				
QA				
MFG				
APPROVED				
		SIZE B	DWG NO	REV
		SCALE	SHEET 1 OF 4	



DRAWN	8/11/2010	TITLE On-site Economizer Typical Piping Diagram		
CHECKED				
QA				
MFG				
APPROVED				
		SIZE	DWG NO	REV
		SCALE	SHEET 2 OF 4	

4

3

2

1

3" FLANGED CONNECTION TO EXCHANGER

21 3/8

9.00

33

33.00

6" FLANGED CONNECTION TO WATER RETURN

12 3/4

88 11/16

23 1/16

18

8

10

30 3/4

8 1/2

24 1/2

33

64 7/8

28 3/8

18

29 7/8

50 1/8

92 3/4

62 5/8

WELD TO EXISTING 5" WATER RETURN CONNECTION

DRAWN	8/11/2010			
CHECKED				
QA		TITLE		
MFG		On-site Economizer Typical Piping Diagram		
APPROVED		SIZE	DWG NO	REV
		SCALE	SHEET 3 OF 4	

4

3

2

1

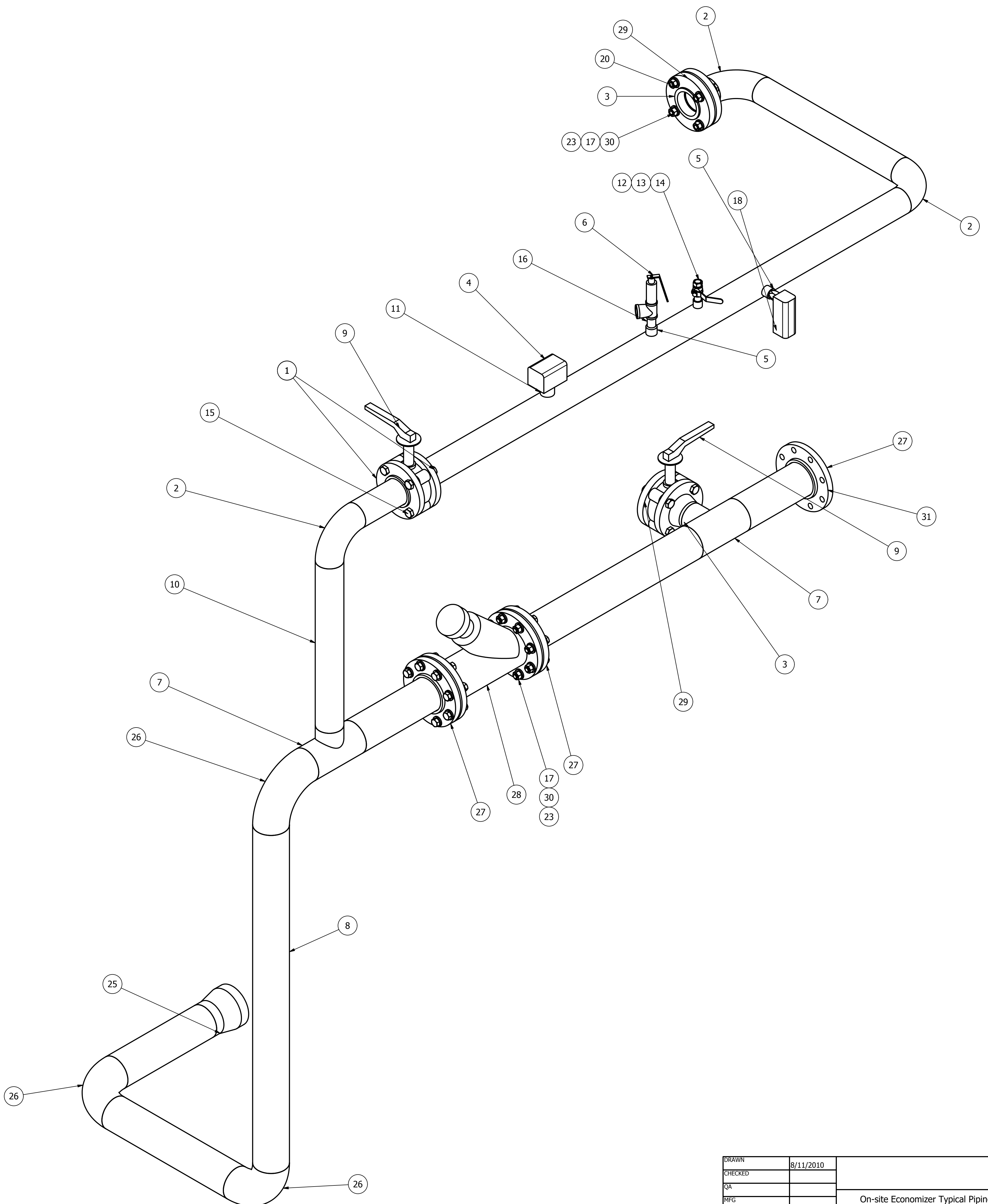
B

B

A

A

Parts List			
ITEM	QTY	PART NUMBER	DESCRIPTION
1	2	ASME B16.5 Flange Slip-On Welding - Class 150 3	Pipe Flanges - Flange Slip - On Welding - Class 150.Inch
2	3	ASME B16.9 Long Radius 90 Deg Elbow 3 x 0.216	Wrought Butt welding Fitting - Long radius 90 Deg Elbow.Inch
3	2	ASME B16.5 Flange Welding Neck - Class 150 3	Pipe Flanges - Flange Welding Neck - Class 150.Inch
4	1	WATTS FS-10C	FLOW SWITCH, 1" MPT, S.S. PADDLE
5	2	ASME B16.11 Half Coupling Threaded - Class 3000 3/4 x 3/4	Threaded Half Coupling - Class 3000
6	1	3/4" PRV	3/4" PRV, BY EnerPro
7	2	ASME B16.9 Reducing Outlet Tee 4 - Schedule 40	Wrought Butt welding Fitting - Reducing Outlet Tee .Inch
8	1	SBPA53B4	STD BLK A/SA53-B ERW PIPE UL 4" (FT)
9	2	6122EL	KITZ 3" LUG Butterfly Valve
10	1	SBPA53B3	STD BLK A/SA53-B ERW PIPE UL 3" (FT)
11	1	3BWHCO1	BLK XS WROT HALF COUPLING 1"
12	1	ASME B16.11 Half Coupling Threaded - Class 3000 1/2 x 1/2	Threaded Half Coupling - Class 3000
13	1.500 in	ASTM A 53/A 53M Pipe with Threaded Ends 1/2 - Schedule 40 - 1.5	Pipe
14	1	1/2 NPT Ball Valve	1/2 NPT Ball Valve
15	16	ANSI B18.2.1 - 5/8-11 UNC - 1.75	Heavy Hex Bolt
16	2.000 in	ASME B36.10M Pipe with Threaded Ends 3/4 - Schedule 40 - 2	Pipe
17	20	ANSI B18.2.2 - 5/8 - 11	Hex Nuts (Inch Series) Hex Nut
18	1	L4006+Well	
20	1	ASME B16.20 Spiral Wound Gasket For ASME B16.5 - Class 150-3	Metallic Gaskets for Pipe Flanges: Ring Joint, Spiral Wound, and Jacketed
23	40	ASTM F436 - 5/8	Washer A
25	1	ASME B16.9 Reducer 5 - Schedule 40	Wrought Butt welding Fitting - Reducer .Inch
26	3	ASME B16.9 Long Radius 90 Deg Elbow 4 x 0.237	Wrought Butt welding Fitting - Long radius 90 Deg Elbow.Inch
27	3	ASME B16.5 Flange Slip-On Welding - Class 150 4	Pipe Flanges - Flange Slip - On Welding - Class 150.Inch
28	1	CBV-FS 4in Armstrong	CIRCUIT BALANCING VALVE
29	2	Flange Threaded - Class 150 3	3" Threaded Flange S.S.
30	20	ANSI/ASME B18.2.1 - 5/8-11 UNC - 3	Hex Bolt - UNC (Regular Thread - Inch)
31	3	ASME B16.20 Spiral Wound Gasket For ASME B16.5 - Class 150-4	Metallic Gaskets for Pipe Flanges: Ring Joint, Spiral Wound, and Jacketed



DRAWN	8/11/2010		
CHECKED			
QA			
MFG			
APPROVED			
		SIZE	DWG NO
		D	
		SCALE	REV